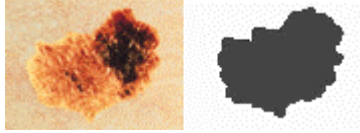
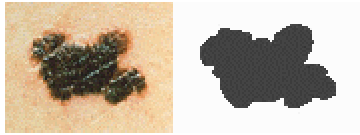


A



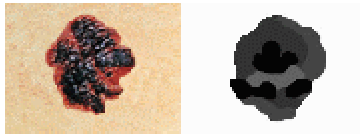
Asymmetry--one half unlike the other half.

B



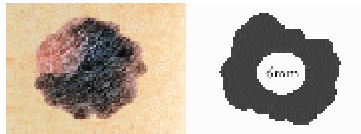
Border --irregular, scalloped or poorly circumscribed border.

C



Color -- varied from one area to another; shades of tan and brown, black; sometimes white, red or blue.

D



Diameter -- while melanomas are usually greater than 6mm in diameter (the size of a pencil eraser) when diagnosed, they can be smaller. If you notice a mole different from others, or which changes, itches, or bleeds (even if it is small) you should see a dermatologist.

From the American Academy of Dermatology