



Target Field Jobsite Report
7.22.09



Photo 1 – Bullpen area soil placement

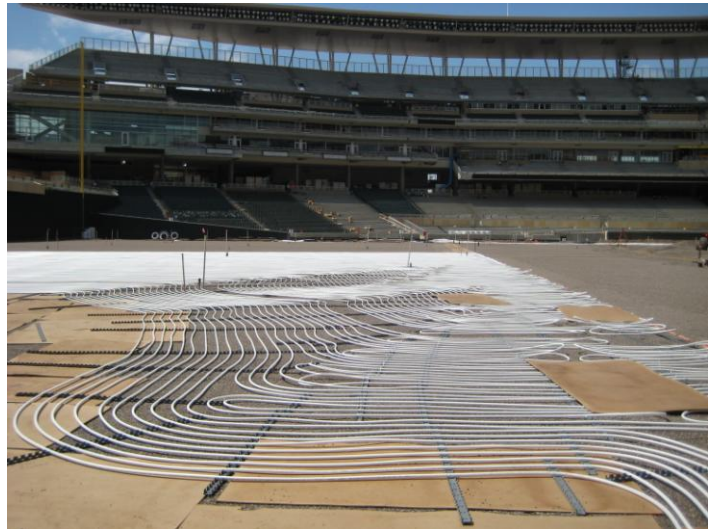


Photo 2 – Playing field heat tubing installation



Photo 3 – Left field retail store framing

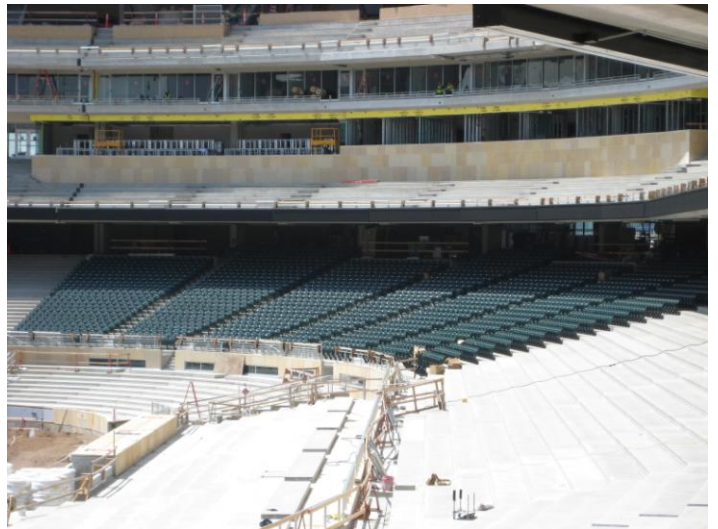


Photo 4 – Seat installation at Home Plate Box area



Photo 5 – Admin office walls are nearly ready for paint

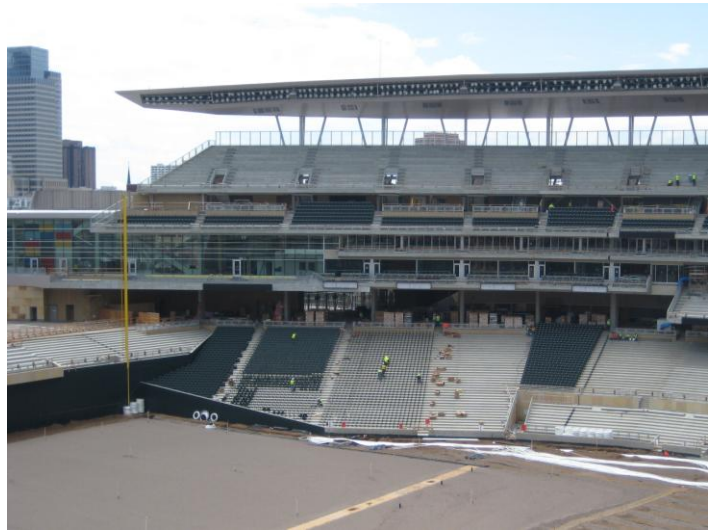


Photo 6 – Seat installation at Field Box area

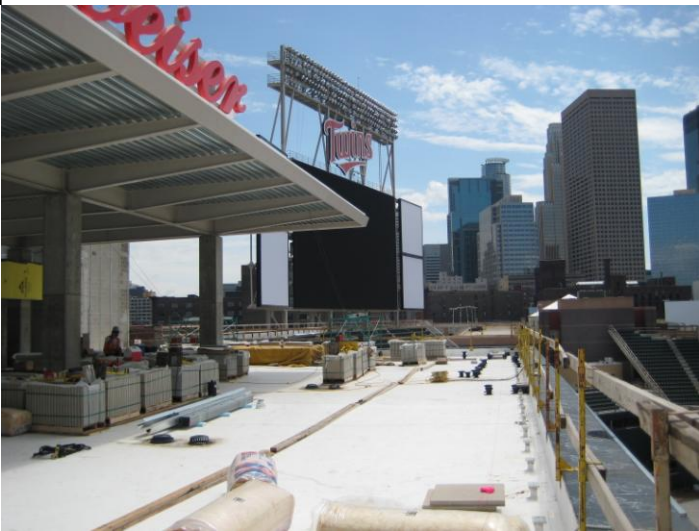


Photo 7 – Budweiser Roof Deck walkway pads have been delivered



Photo 8 – Right field suites are nearing completion



Photo 9 – Grandstand area seat installation

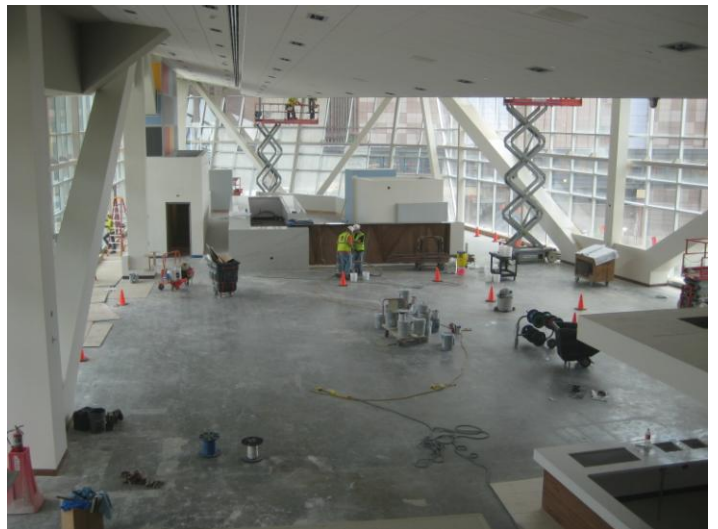


Photo 10 – Metropolitan Club finishes and millwork installation



Photo 11 – Ramp A walkway connection



Photo 12 – Plaza and Main Ticket Office



Photo 13 – Press Box glass installation



Photo 14 – Legends Club concessions

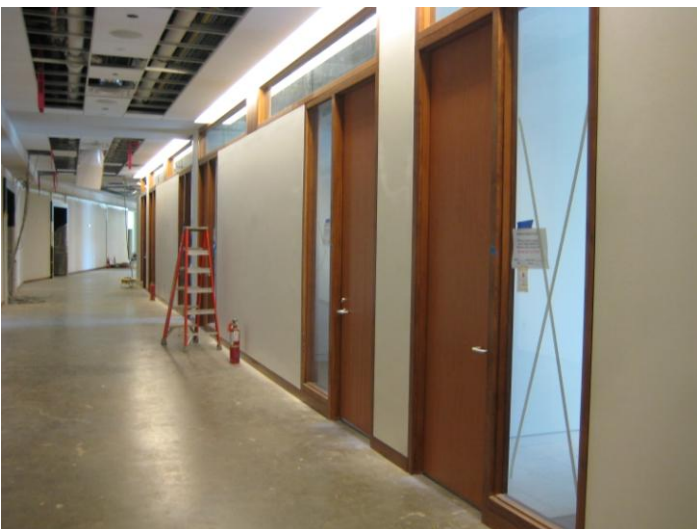


Photo 14 – Suite level corridor



Photo 15 – Home Plate View seating area

Upcoming Construction Activity:

- Interior finishes continue throughout the ballpark.
- Main ticket office and mezzanine construction is complete with punch list (final design team inspection) this week.
- Seat installation will continue at the 3rd base area and right field.
- Flooring (carpet, wood) at the Metropolitan Club will take place this week and next.
- The metal panels on the back of the main scoreboard will start next week.
- Wood louver (pedestrian ramp exterior walls) installation is scheduled for early August
- Playing field sod installation is scheduled to begin the week of August 24th.
- The south lot will be cleared (construction trailers removed) to prepare for the final paving activities at the end of August.